



HIGH TEMPERATURE FILTER HOUSING

Eco-friendly reusable high temperature filter housing made of heavy wall PTFE for the most demanding applications. Designed for the continuous filtering of high temperature corrosive chemicals. Heavy duty construction.



FEATURES

Innovative Design

Spin-on ring assembly not only ensures a positive seal every time, but it also enables quick and easy cartridge replacement with no damage to the housing o-ring. Housing collar retainer ring and filter cartridge clip substantially reduce cartridge maintenance clearance space.

Exceptional chemical compatibility: 100% PTFE fluoropolymer wetted surfaces are compatible with virtually all chemistries.

Durable, heavy wall PTFE outlasts comparable thin-wall housings. Fast filter change-outs without removing the fluid connections.

Low Operating Costs

Reduced cost of ownership (COO): The need to replace the filter housing with cartridge change eliminated with housing design.

Safety & Reliability

Reduced downtime (MTTR): Fast filter cartridge change-outs without the need for removing the fluid connections.

Enhanced service life: Durable, heavy wall PTFE construction lasts substantially longer than comparable thin wall PFA housings.



Temperature:
Up to 180°C
(356° F)



Pressure:
Continuous at
2.75 bar
(40 PSI)

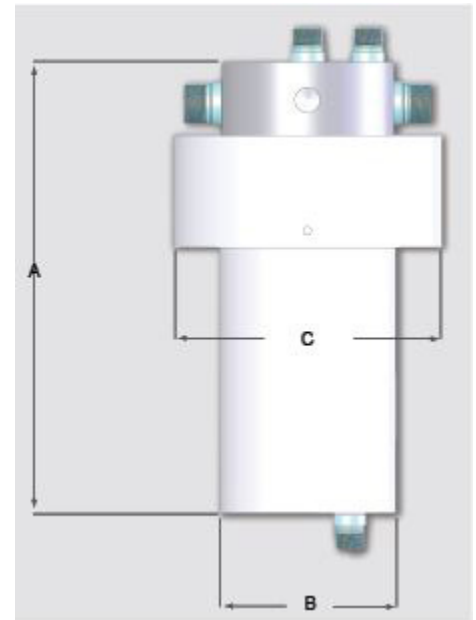


For more immediate needs please call us at 262-253-4800 and one of your experienced knowledgeable staff will help you!

LTFH Reusable Filter Housing

SPECIFICATIONS

- | | |
|--------------------------------------|--|
| Construction | <ul style="list-style-type: none"> ▫ 100% heavy wall PTFE fluoropolymer wetted surfaces ▫ End cap mounting holes ▫ Filter body slides on and locks into position by means of a spin-on ring assembly (spanner wrench included) ▫ Able to be mounted upright or inverted (mounting bracket available) |
| Temperature/
Pressure Range | Up to 180° C (356° F) continuous at 2.75 bar (40 PSI). |
| Fluid Connections | <ul style="list-style-type: none"> ▫ 70mm, 10-inch, 222 o-ring SOE filter cartridge ▫ 83mm, 10-inch, 222 o-ring SOE filter cartridge ▫ 70mm, 20-inch, 222 o-ring SOE filter cartridge |
| Cartridge Housing
Sizes Available | <ul style="list-style-type: none"> ▫ 1/2-inch (12mm) to 1-inch (25mm) Flaretek® or Super 300 Type Pillar® process connections ▫ 1/8-inch (3mm) to 1/2-inch (12mm) Flaretek® or Super 300 Type Pillar® drain/vent connections |



DIMENSIONS

FILTER HOUSING	FILTER LENGTH
70MM	10" (254mm)
70MM	20" (508mm)
83MM	10" (254mm)

Custom sizes available, consult factory.



GORDON HATCH CO. INC.
—Representing quality products since 1941

"A" DIMENSION	"B" DIMENSION	"C" DIMENSION
14.25" (362mm)	Ø4.75" (121mm)	Ø6.50" (165mm)
24.31" (618mm)		Ø7.48" (190mm)
14.14" (359mm)	Ø5.20" (132mm)	

MODEL NUMBER BREAKDOWN

LTFH	70	10	B	A	Z
LTFH series	Filter diameter	Length	Inlet and Outlet Connections	Chamber End Connection (Drain in upright position)	Head Connections (Bleed in upright position)
	70 = 70mm filter	10 = 10" overall length	A = 1/2" Flared	O (or 0) = No connection	O (or 0) = No connections
	83 = 83mm filter	20 = 20" overall length	B = 3/4" Flared	A = 1/2" Flared	A = 1/2" Flared
		30 = 30" overall length	C = 1" Flared	B = 3/4" Flared	S = 3/8" Flared
			S = 3/8" Flared	S = 3/8" Flared	T = 3/8" Super 300 Pillar
			T = 3/8" Super 300 Pillar	T = 3/8" Super 300 Pillar	V = 1/2" Super 300 Pillar
			V = 1/2" Super 300 Pillar	V = 1/2" Super 300 Pillar	Y = 1/4" Super 300 Pillar
			W = 3/4" Super 300 Pillar	W = 3/4" Super 300 Pillar	Z = 1/4" Flared
			X = 1" Super 300 Pillar	Y = 1/4" Super 300 Pillar	
				Z = 1/4" Flared	
				2 = 1/8" Super 300 Pillar	
				3 = 1/8" Flared	

DATA SHEET

Click Here to contact us!



GORDON HATCH CO. INC.
—Representing quality products since 1941