

INCREASED PRODUCTION TIMES

Improves product times in drying applications used in wafer processing, solvent drying and surface finishing. Delivers superior temperature stability with changes in flow.



Soltan₂

FEATURES

Innovative Design

Heated nitrogen or other clean gases reduce drying time and improve production times. The Soltan₂ is designed to safely heat process gas through indirect contact instead of direct immersion.

Safety & Reliability

316 stainless steel wetted surfaces, gas pathway through a stainless tube embedded in cast aluminium heating block; explosion resistant cast aluminum electrical enclosure

Delivers superior temperature stability with changes in flow.

Redundant temperature sensors to ensure safe operation.

Grounded metal construction

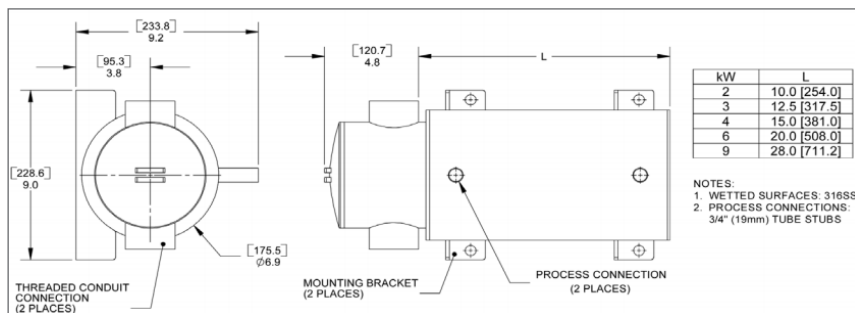
Dual element thermocouples

Insulated housing

Explosion resistant electrical enclosure

Replaceable, hermetically sealed high limit thermal cutoff device (TCO)

<p>Temperature Range: Up to -195°C (-320°F) to 200°C (392°F)</p>	<p>0PSIG (0 kPa) to 400 PSIG (2859 kPa)</p>
<p>Watts: 2kW to 9kW</p>	<p>Certifications: CE, ETL (Tested to UL 823, UL 499 compliant and CSA C22.2). Rated for Class I, Division 2 hazardous locations.</p>
<p>120 to 600 volts, Single phase or 3 phase</p>	



CONNECTIONS: 1/2 inch (12mm) or 3/4 inch (19mm) tube connections (custom connections available).

LTFH Reusable Filter Housing

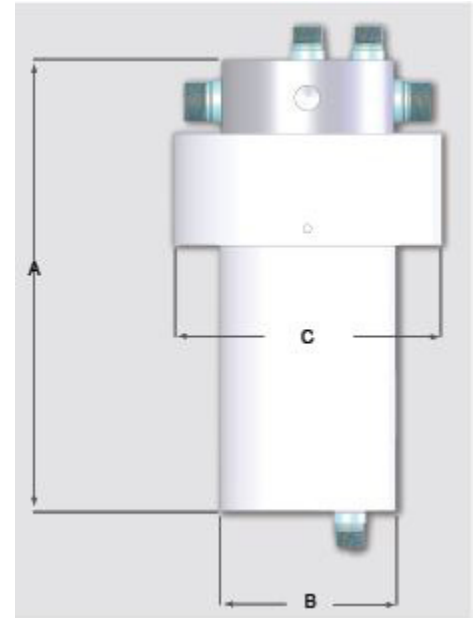
SPECIFICATIONS

- Construction**
- 100% heavy wall PTFE fluoropolymer wetted surfaces
 - End cap mounting holes
 - Filter body slides on and locks into position by means of a spin-on ring assembly (spanner wrench included)
 - Able to be mounted upright or inverted (mounting bracket available)

Temperature/ Pressure Range Up to 180° C (356° F) continuous at 2.75 bar (40 PSI).

- Fluid Connections**
- 70mm, 10-inch, 222 o-ring SOE filter cartridge
 - 83mm, 10-inch, 222 o-ring SOE filter cartridge
 - 70mm, 20-inch, 222 o-ring SOE filter cartridge

- Cartridge Housing Sizes Available**
- 1/2-inch (12mm) to 1-inch (25mm) Flaretek® or Super 300 Type Pillar® process connections
 - 1/8-inch (3mm) to 1/2-inch (12mm) Flaretek® or Super 300 Type Pillar® drain/vent connections



DIMENSIONS

FILTER HOUSING	FILTER LENGTH
70MM	10" (254mm)
70MM	20" (508mm)
83MM	10" (254mm)

Custom sizes available, consult factory.

"A" DIMENSION	"B" DIMENSION	"C" DIMENSION
14.25" (362mm)	Ø4.75" (121mm)	Ø6.50" (165mm)
24.31" (618mm)		
14.14" (359mm)	Ø5.20" (132mm)	Ø7.48" (190mm)

MODEL NUMBER BREAKDOWN

LTFH	70	10	B	A	Z
LTFH series	Filter diameter	Length	Inlet and Outlet Connections	Chamber End Connection (Drain in upright position)	Head Connections (Bleed in upright position)
	70 = 70mm filter	10 = 10" overall length	A = 1/2" Flared	O (or 0) = No connection	O (or 0) = No connections
	83 = 83mm filter	20 = 20" overall length	B = 3/4" Flared	A = 1/2" Flared	A = 1/2" Flared
		30 = 30" overall length	C = 1" Flared	B = 3/4" Flared	S = 3/8" Flared
			S = 3/8" Flared	S = 3/8" Flared	T = 3/8" Super 300 Pillar
			T = 3/8" Super 300 Pillar	T = 3/8" Super 300 Pillar	V = 1/2" Super 300 Pillar
			V = 1/2" Super 300 Pillar	V = 1/2" Super 300 Pillar	Y = 1/4" Super 300 Pillar
			W = 3/4" Super 300 Pillar	W = 3/4" Super 300 Pillar	Z = 1/4" Flared
			X = 1" Super 300 Pillar	Y = 1/4" Super 300 Pillar	
				Z = 1/4" Flared	
				2 = 1/8" Super 300 Pillar	
				3 = 1/8" Flared	